



MetroWest+

Portishead Branch Line (MetroWest Phase 1)

TR040011

Applicant: North Somerset District Council

2.11 – 2.14 Portishead Station plans

Building Design: Proposed Station Buildings; Station Co-ordination Plan; 3D views; Platform Lighting & Lighting Control Layout

The Infrastructure Planning (Applications: Prescribed Forms and Procedure) Regulations 2009, 5(2) (o)

Planning Act 2008

Author: North Somerset District Council

Date: September 2021

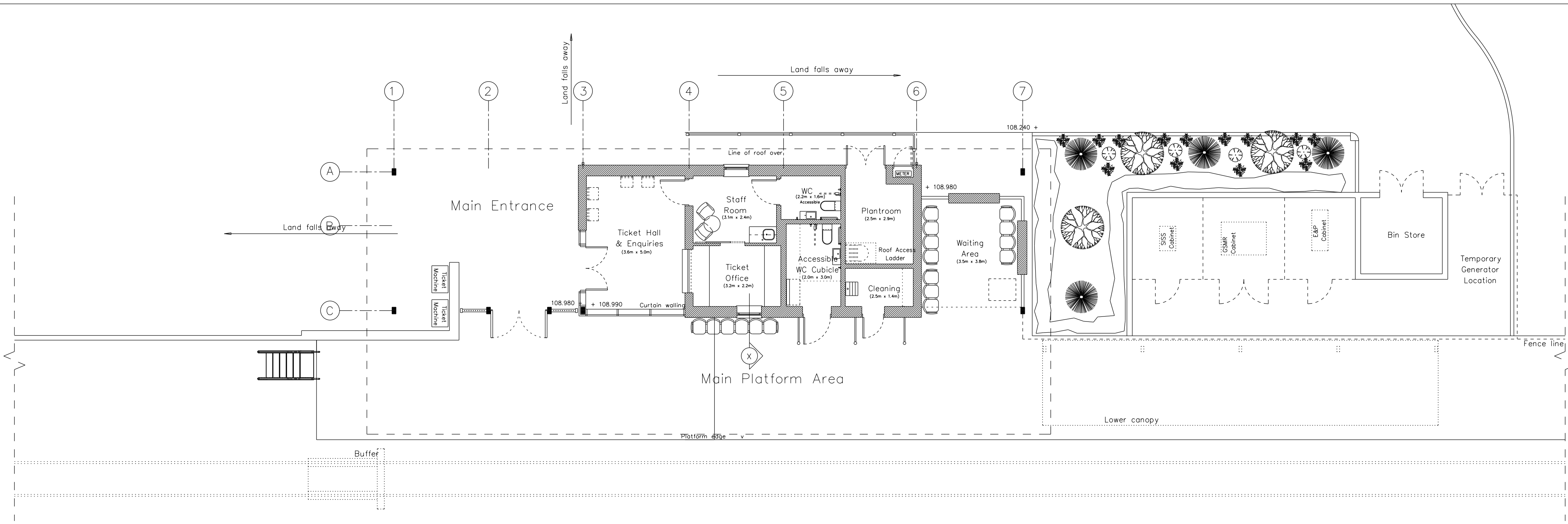
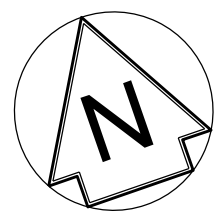


Document Index

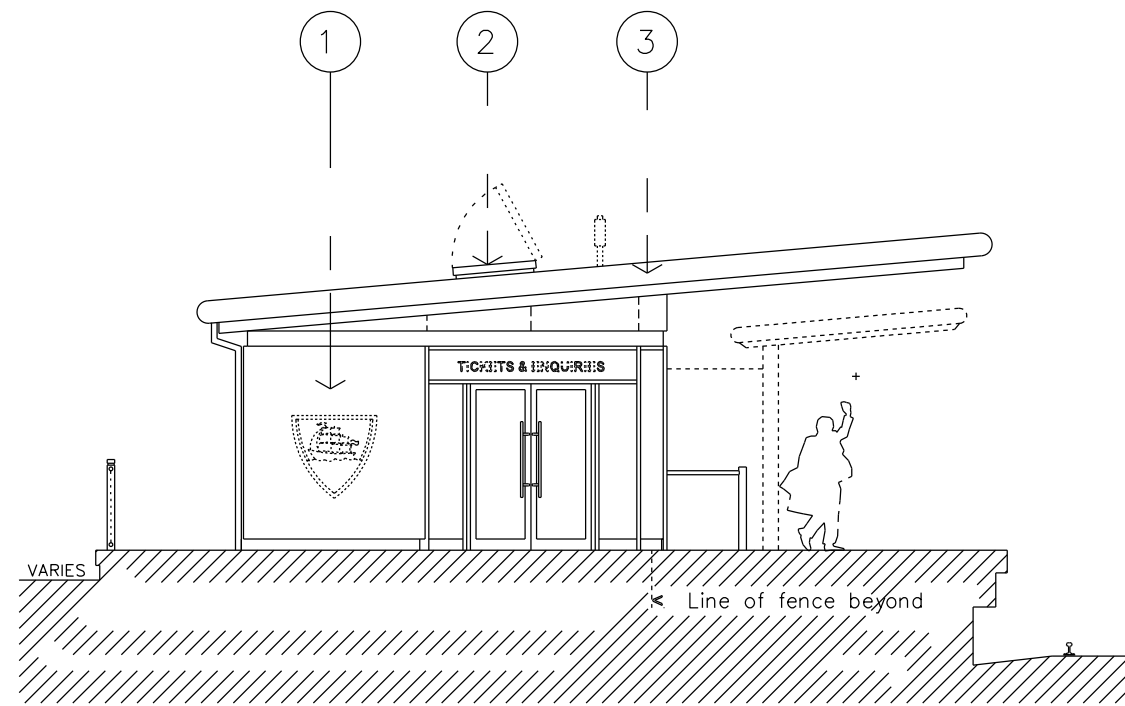
Version	Date	Status of version	Document Index	Document Revision	Changes
1	19 November 2019	Application	2.11 Portishead Station Building Design: Proposed StationBuildings - W1097B-ARP-DRG-EAR-300001 Rev A01 2.12 Portishead Station Co-ordination Plan* - W1097B-ARP-DRG-EST-300001 Rev A02 2.13 Portishead Station 3D views - W1097B-ARP-DRG-EST-300002 Rev A01 2.14 Portishead Station Platform Lighting & Lighting ControlLayout (Sheets 1 and 2)** - W1097B-ARP-DRG-EMF-300001-2 Rev A02	-	-
2	20 September 2021		2.11 Portishead Station Building Design: Proposed StationBuildings - W1097B-ARP-DRG-EAR-300001 Rev A01 2.12 Portishead Station Co-ordination Plan* - W1097B-ARP-DRG-EST-300001 Rev A02 2.13 Portishead Station 3D views - W1097B-ARP-DRG-EST-300002 Rev A01 2.14 Portishead Station Platform Lighting & Lighting ControlLayout (Sheets 1 and 2)** - W1097B-ARP-DRG-EMF-300001-2 Rev A02	N/A A03 N/A N/A	Trinity Primary School Bridge and associated works removed.

* The architectural drawing for the Portishead Station Co-ordination plan Doc 2.12 (W1097B-ARP-DRG-EST-300001) has developed and not all of the final products are aligned. The internal layout has been superseded please refer to the internal layout of Portishead Station Building Design, Doc 2.11 (W1097B-ARP-DRG-EAR-300001)

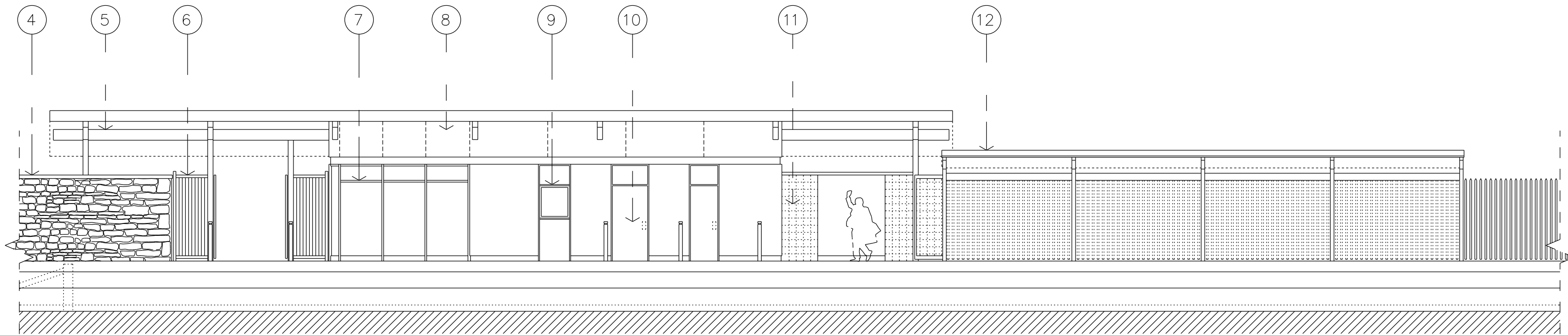
**The architectural drawings for the Portishead Station Platform Lighting and Lighting Control Layout, Doc 2.14 (W1097B-ARP-DRG-EMF-300001 and 300002) have developed and not all the 'final' products are aligned. The plans do not show any lighting in the non-public areas which have been re-worked.



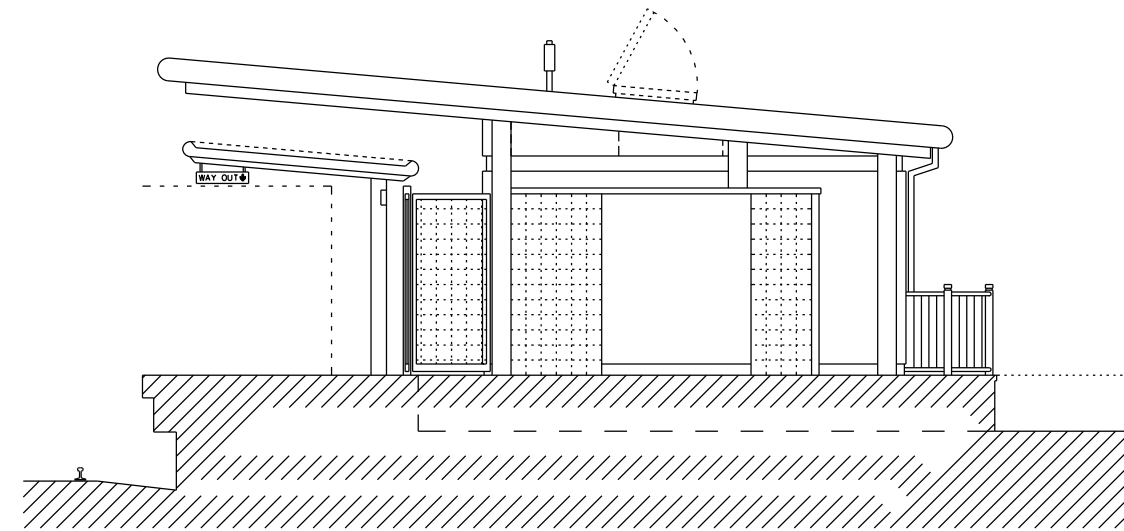
PLAN Unheated Ticket Hall & Waiting Room + single Accessible WC (metal roof)



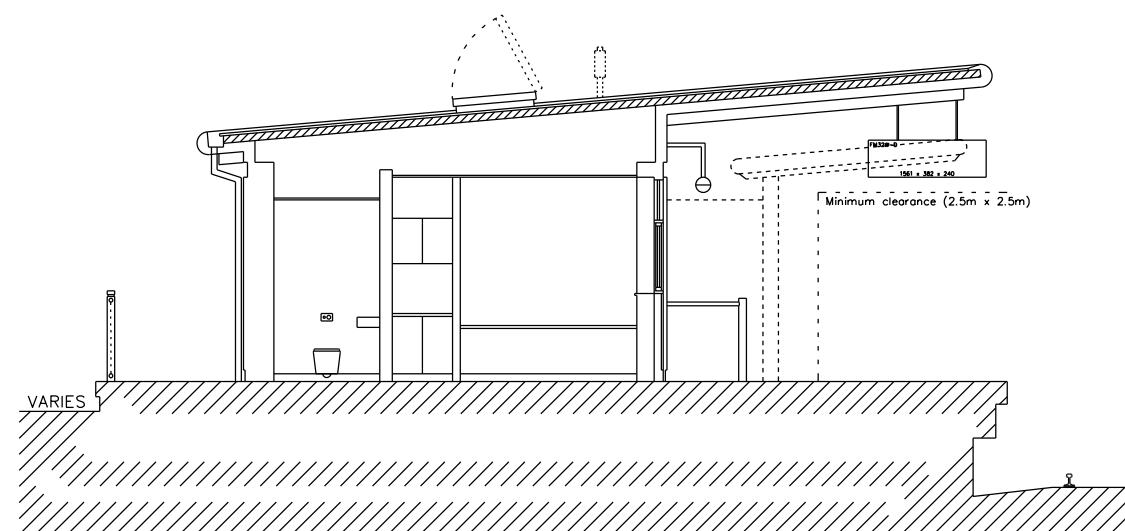
ENTRANCE ELEVATION (WEST)



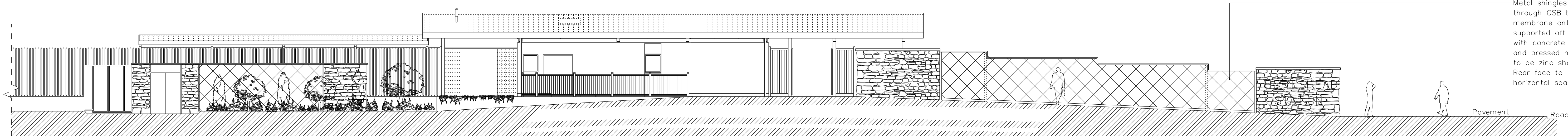
PLATFORM ELEVATION (PART)



EAST ELEVATION



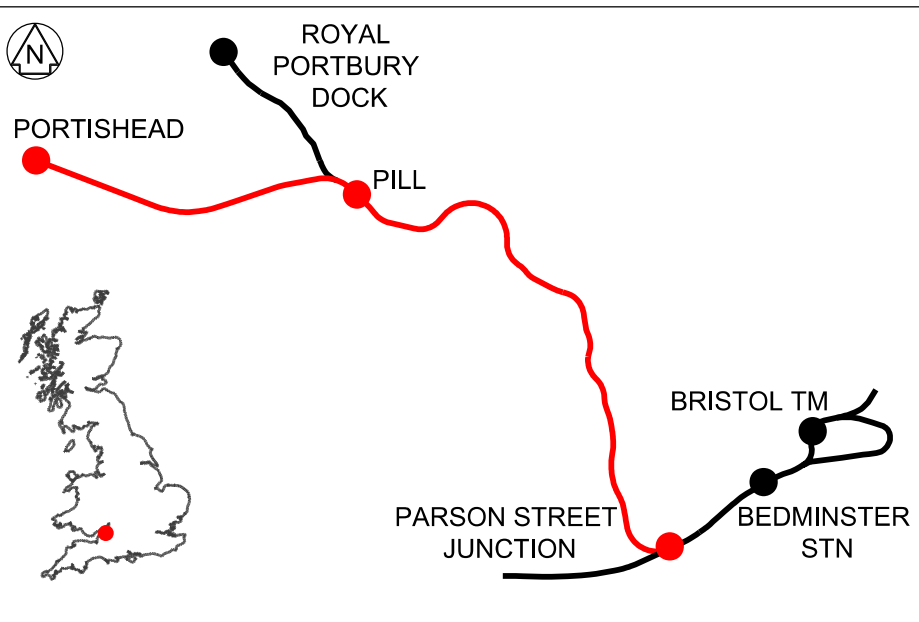
CROSS SECTION X



CAR PARK ELEVATION (PART)

- Legend/Notes
01. FINE TEXTURED THROUGH COLOUR RENDER WITH IMPRINTED LOGO SET INTO FINISH.
 02. GAS-SPRUNG ROOF ACCESS HATCH FOR MAINTENANCE USE.
 03. COLOUR COATED METAL ROOFING SYSTEM AND FASCIA WITH INTEGRAL GUTTER AND MATCHING DOWN-PIPES.
 04. BOUNDARY WALL COMPRISING NATURAL STONE FACED PANELS AT ENDS / CORNERS WITH METAL SHINGLES SET ON FRAMING IN BETWEEN.
 05. EXPOSED BOX SECTION STEEL BEAMS AND PURLINS TO HIDE ROOF FIXINGS OVER (SPECIALIST FIXINGS FOR SHS SECTIONS).
 06. METAL SECTIONED PANELS AND MAIN ENTRANCE GATES WITH POLYESTER POWDER COATED FINISH.
 07. SAFETY GLAZED CURTAIN WALL WINDOW SECTIONS TO ENQUIRY & TICKET HALL.
 08. COLOUR COATED METAL PANEL SYSTEM TO UPPER WALL AREAS.
 09. COLOUR COATED METAL FRAMED INWARD OPENING WINDOW TO STAFF ROOM WITH SAFETY GLAZING AND INTEGRAL BLIND.
 10. COLOUR COATED METAL FRAMED DOOR WITH SAFETY GLAZED OVER-PANEL TO ACCESSIBLE WC WITH RADAR CONTROL.
 11. COLOURED GLASS BLOCK INFILL PANELS (TRANSLUCENT) WITH METAL CAPPING OVER.
 12. MODULAR LOWER CANOPY SYSTEM WITH STEEL SUPPORTS & PROFILED ROOF CLADDING WITH INTEGRAL GUTTER.

0 2 4 6 8 10m
SCALE 1:100 @ A0



Rev	Date	Description of Revisions	Drawn	Chkd	Appr	Status	Subsidiary
A01	15/07/19	FOR DCO APPLICATION				JB	RS
Rev	Date	Description of Revisions	Drawn	Chkd	Appr	Status	Subsidiary
						FIT FOR INFORMATION	S2



Contractor(s)

Project
PORTISHEAD BRANCH LINE
(METROWEST PHASE 1)

Drawing Title
PROPOSED STATION BUILDINGS

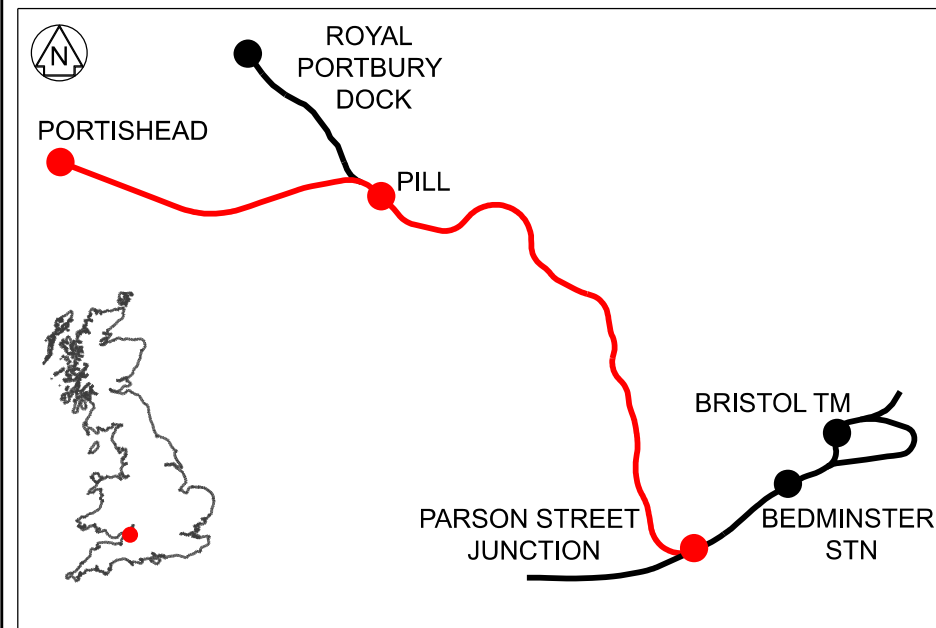
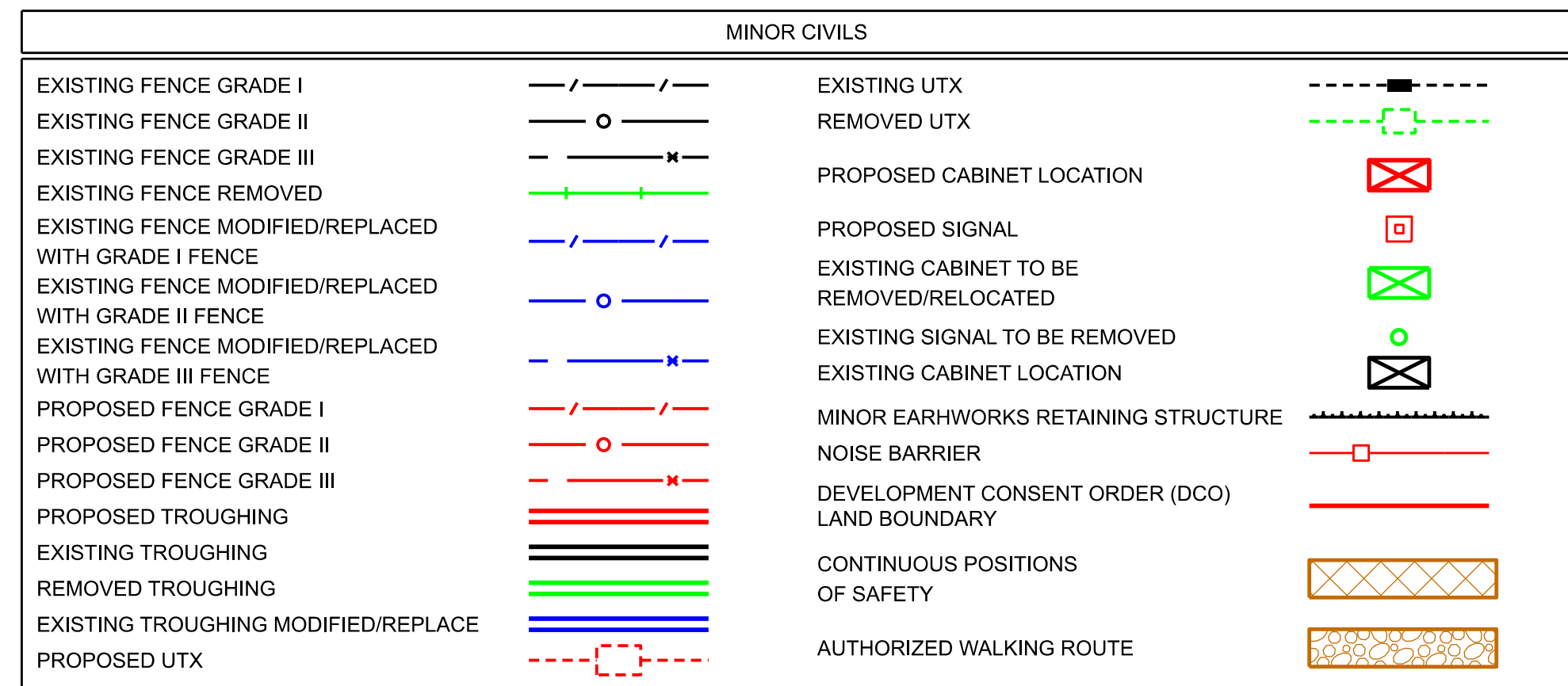
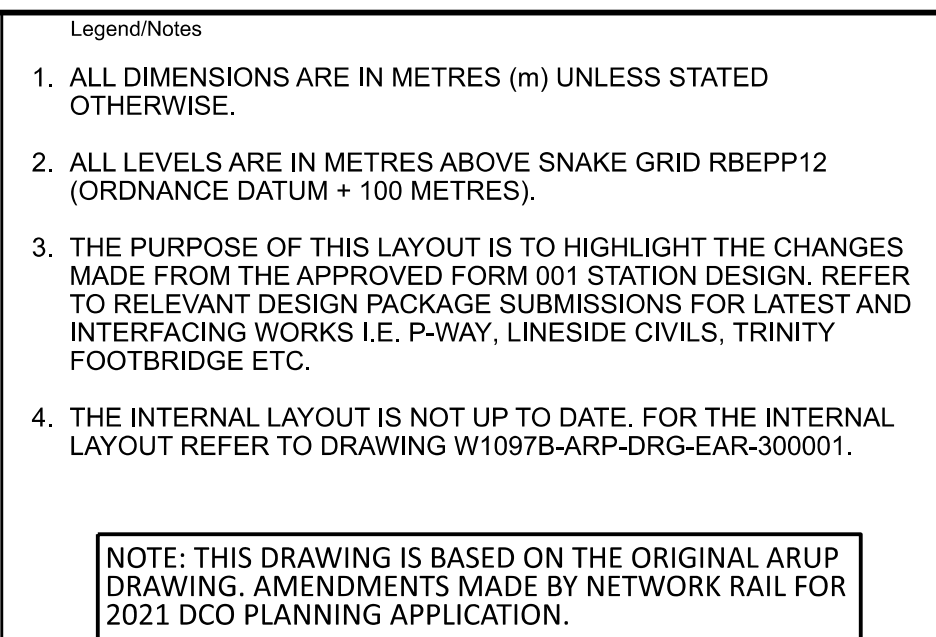
Designed	QUADRA BEC	Signed	Date
Drawn	J. BACINSKI	Signed	Date
Checked	R. SNELL	Signed	Date
Approved	R. SNELL	Signed	Date

Scale(s)
1:100
Alternative Reference
POD 129M 26CH

Sheet
1 of 1

Drawing Number
W1097B-ARP-DRG-EAR-300001

Revision
A01



A02	26/09/19	FOR DCO APPLICATION	JB	RS	RS
A03	10/09/21	NR AMENDMENTS FOR DCO PLANNING APPLICATION	RR	RB	RB
Rev	Date	Description of Revisions	Drawn	Chkd	App
Status			FIT FOR INFORMATION		Suitability S2



Contractor(s)

PORTISHEAD BRANCH LINE (METROWEST PHASE 1)

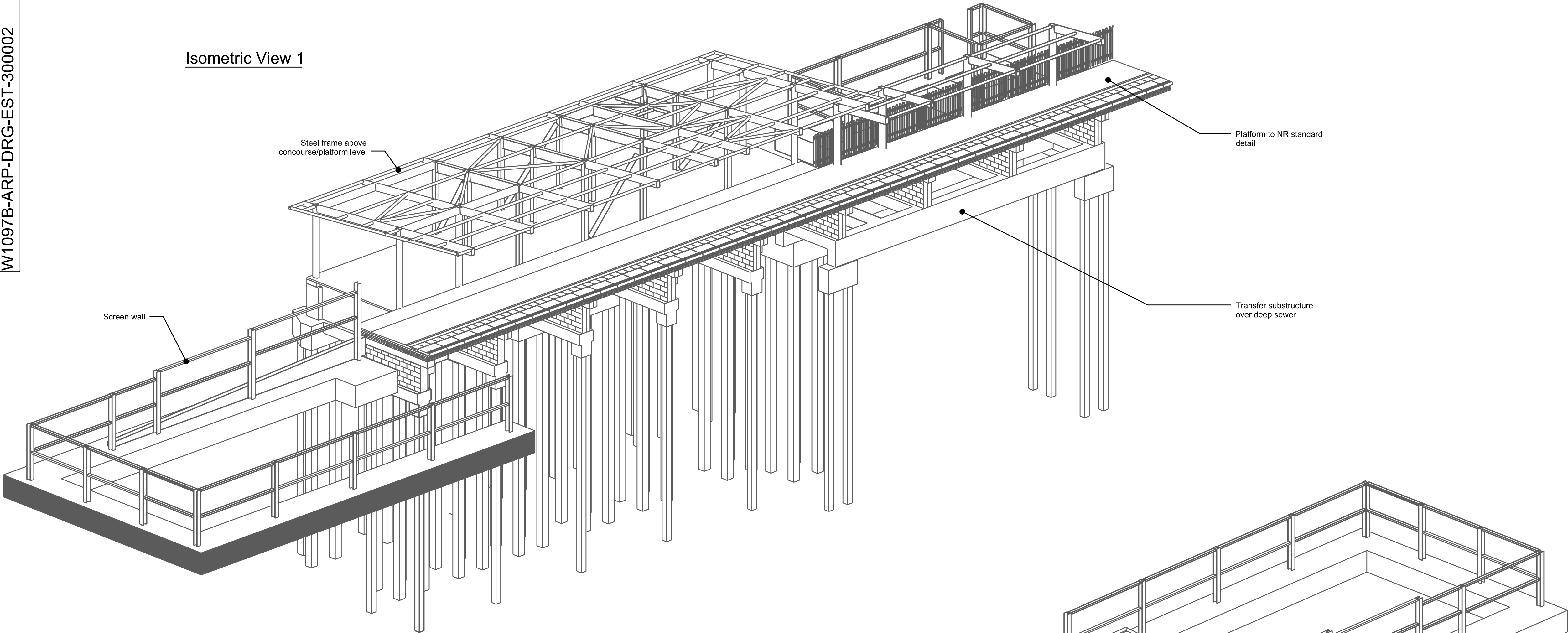
Drawing Title

PORTISHEAD STATION
COORDINATION PLAN

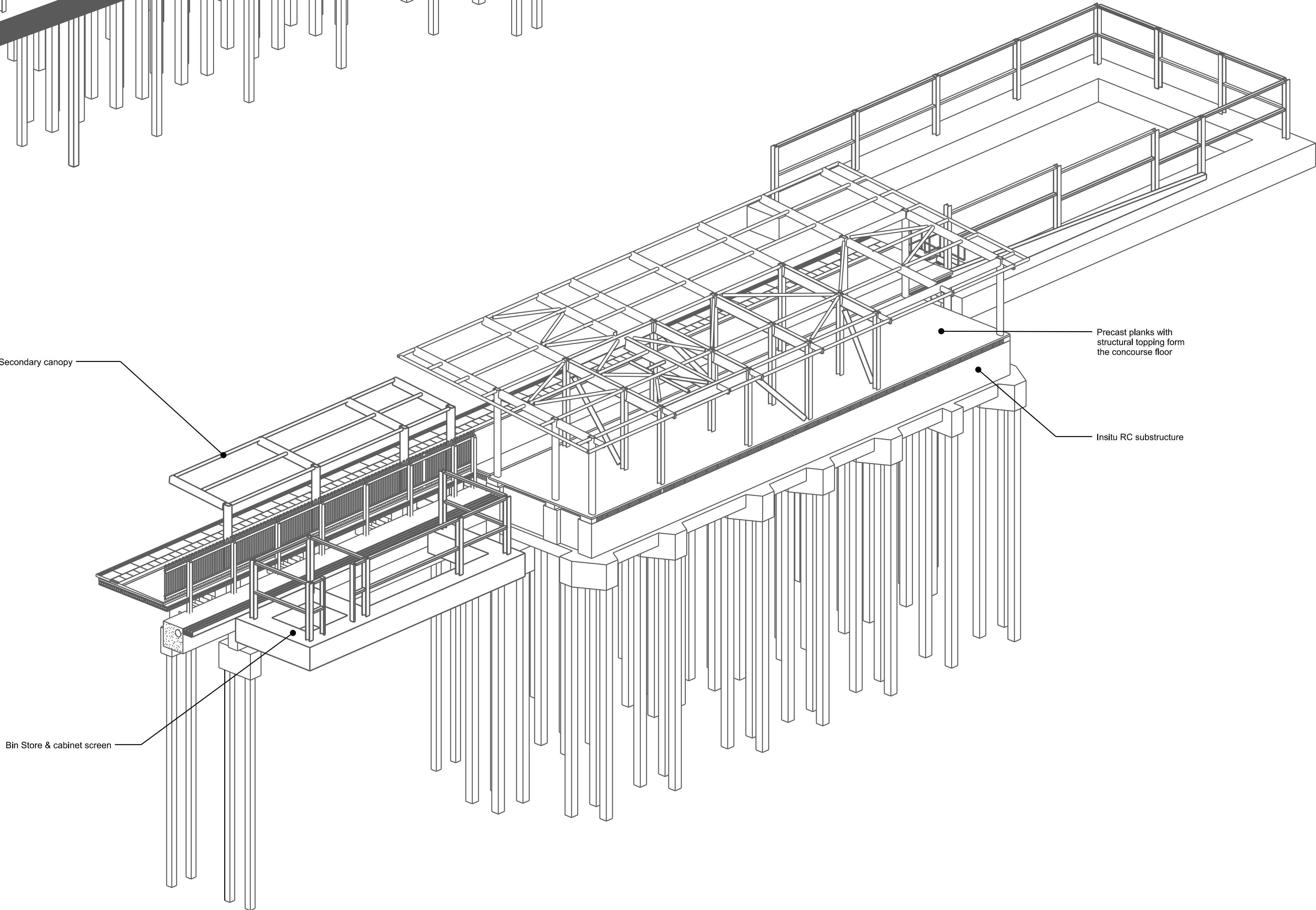
Designed	.	Signed	Date
Drawn	R. Raj	Signed	Date 10/09/2
Checked	R. Buckby	Signed	Date 10/09/2
Approved	R. Buckby	Signed	Date 10/09/2
Scale(s)	ELR & Mileage		

1:100	POD 129MI28CH
Alternative Reference 000000-NWR-WST-POD-DRG-EST-300001	Sheet 1 of 1
Drawing Number W1097B-APP-DRG-EST-300001	Revision A03



Isometric View 1



Isometric View 2



Legend/Notes

1. THIS DRAWING IS TO BE READ IN CONJUNCTION WITH ALL RELEVANT ENGINEER'S DRAWINGS, ARCHITECT'S DRAWINGS AND SPECIFICATIONS.
2. FOR SETTING OUT INFORMATION, REFER TO THE RELEVANT ARCHITECT'S DRAWING.
3. STRUCTURAL LEVELS ARE 100M ABOVE ORDNANCE DATUM. THEY ARE SHOWN THUS:
ON PLANS M 
ON SECTIONS MM 
4. ALL DIMENSIONS ARE IN MILLIMETRES UNLESS NOTED OTHERWISE.
5. DRAWINGS SHOULD NOT BE SCALED EITHER BY HAND OR FROM THE COMPUTER DIGITAL DATA, ONLY FIGURED DIMENSIONS ARE TO BE USED.
6. THE CONTRACTOR SHALL BE RESPONSIBLE FOR THE DESIGN, FABRICATION, ERECTION AND REMOVAL OF ALL TEMPORARY WORKS AND SHALL PROVIDE ALL TEMPORARY BRACING AND BACK PROPPING NECESSARY TO MAINTAIN STRUCTURAL STABILITY DURING CONSTRUCTION.
7. SPECIFIC TEMPORARY WORKS CONSTRAINTS ARISING FROM THE PERMANENT WORKS DESIGN, IF AND WHERE APPLICABLE, ARE NOTED ON THE ARUP DRAWINGS TO WHICH THEY RELATE.

A01	16/07/19	FOR DCO APPLICATION	JB	RS	RS
Rev	Date	Description of Revisions	Drawn	Chkd	Appr
Status					Suitability
FIT FOR INFORMATION					S2



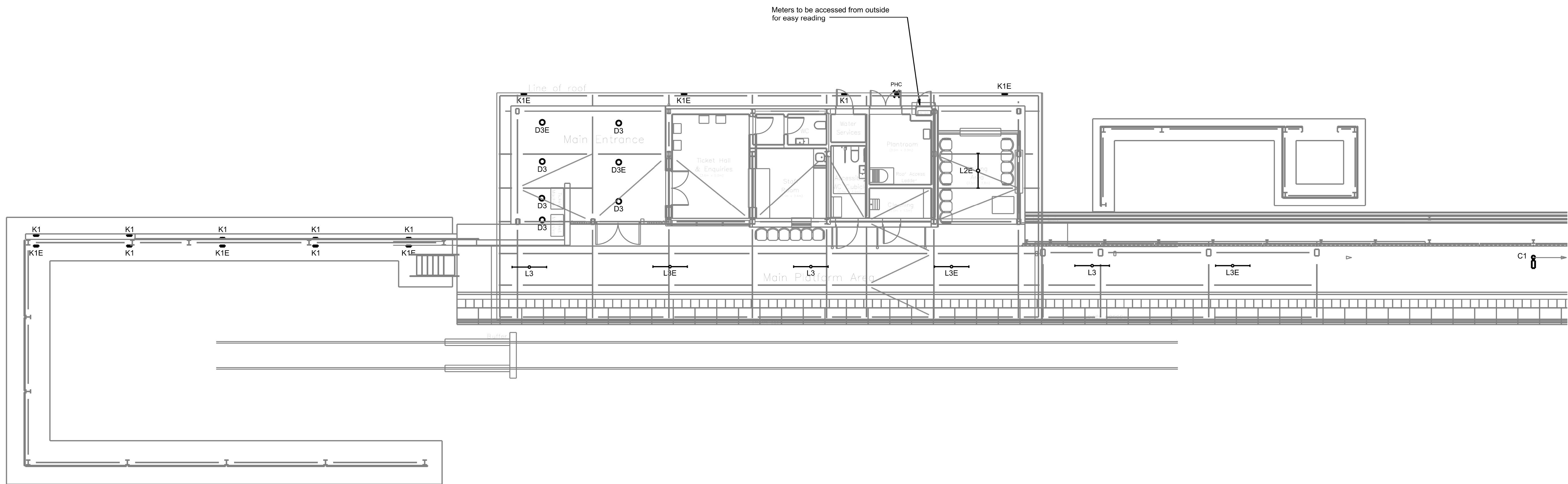
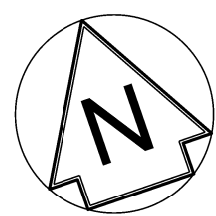
Contractor(s)

ARUP 63 St Thomas Street
Bristol BS1 6JZ
Tel +44(0)117 976 5432 Fax +44(0)117 976 5433
www.arup.com

Project
**PORTISHEAD BRANCH LINE
(METROWEST PHASE 1)**

Drawing Title
**PORTISHEAD STATION
3D VIEWS**

Designed	N. PRICE	Signed	Date	16/07/19
Drawn	J. BACINSKI	Signed	Date	16/07/19
Checked	R. SNELL	Signed	Date	16/07/19
Approved	R. SNELL	Signed	Date	16/07/19
Scale(s)	As Shown		ELR & Mileage POD	
Alternative Reference			Sheet	1 of 1
Drawing Number			Revision	
W1097B-ARP-DRG-EST-300002			A01	

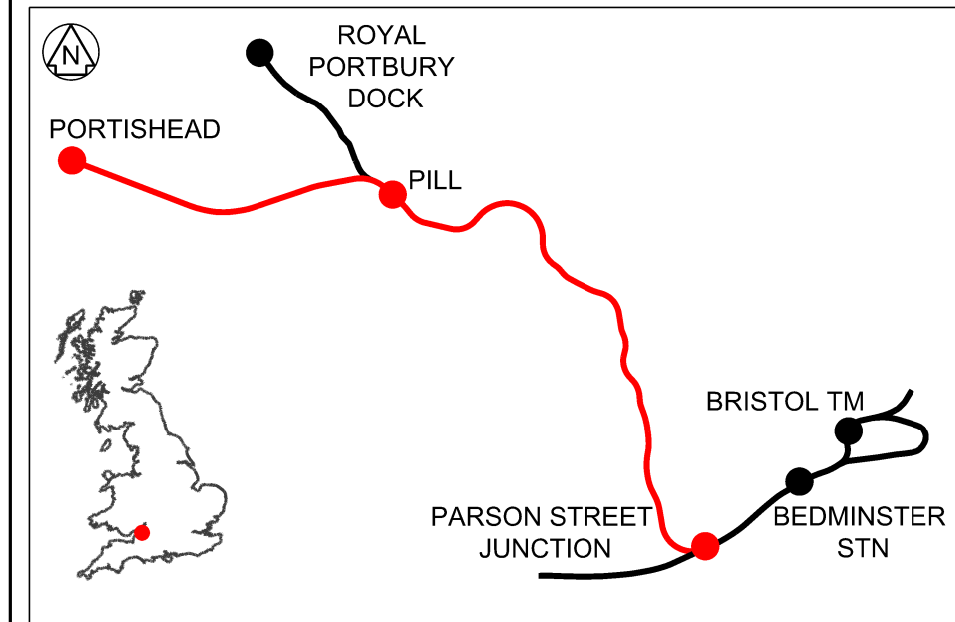
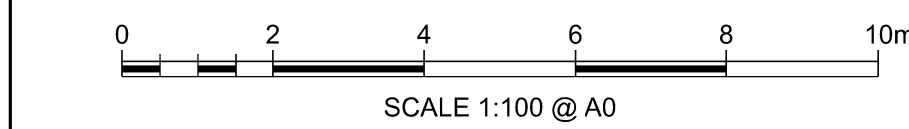


Legend/Notes

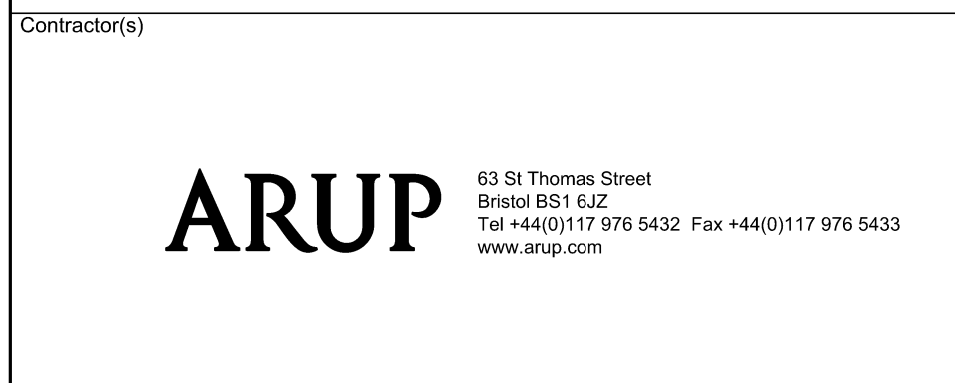
- Notes**
- THIS IS NOT AN INSTALLATION DRAWING.
 - DO NOT SCALE FROM THIS DRAWING. REFER TO ARCHITECTS FOR BUILDING DIMENSION INFORMATION.
 - THE SIZES AND LOCATION OF ALL MEP EQUIPMENT, FIXTURES AND SERVICES ARE INDICATIVE ONLY. FINAL SIZE, SELECTION AND LOCATION SHALL BE CONFIRMED DURING THE DETAIL DESIGN.
 - THE FINAL COORDINATION OF ALL MEP SERVICES SHALL BE CONFIRMED AT A DETAIL DESIGN STAGE.

Legend

- PR Presence Detection
ABS Absence Detection
PHC Photo Cell
M Manual Switching
PC Pull Cord
Light Switch



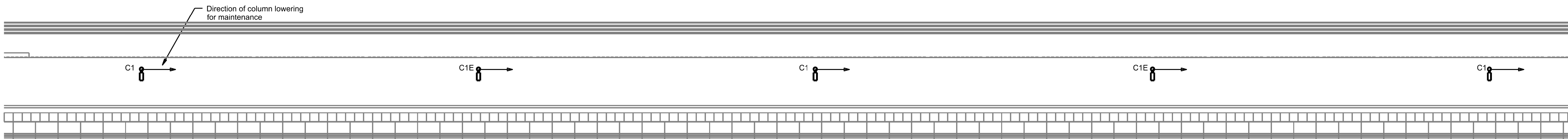
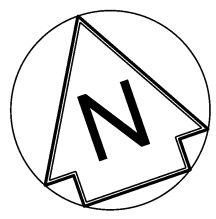
ADD	26/09/19	FOR ECO APPLICATION	JB	RS	RS
Rev	Date	Description of Revisions	Drawn	Chkd	Appr
Status	FIT FOR INFORMATION				Suitability S2



Project
**PORTISHEAD BRANCH LINE
(METROWEST PHASE 1)**

Drawing Title
**PORTISHEAD PLATFORM
LIGHTING &
LIGHTING CONTROL LAYOUT
SHEET 1 OF 2**

Designed	J. BACINSKI	Signed	Date	26/09/19
Drawn	J. BACINSKI	Signed	Date	26/09/19
Checked	R. SNELL	Signed	Date	26/09/19
Approved	R. SNELL	Signed	Date	26/09/19
Scale(s)	ELR & Message 1:100 POD			
Alternative Reference	Sheet 1 of 2			
Drawing Number	Revision			



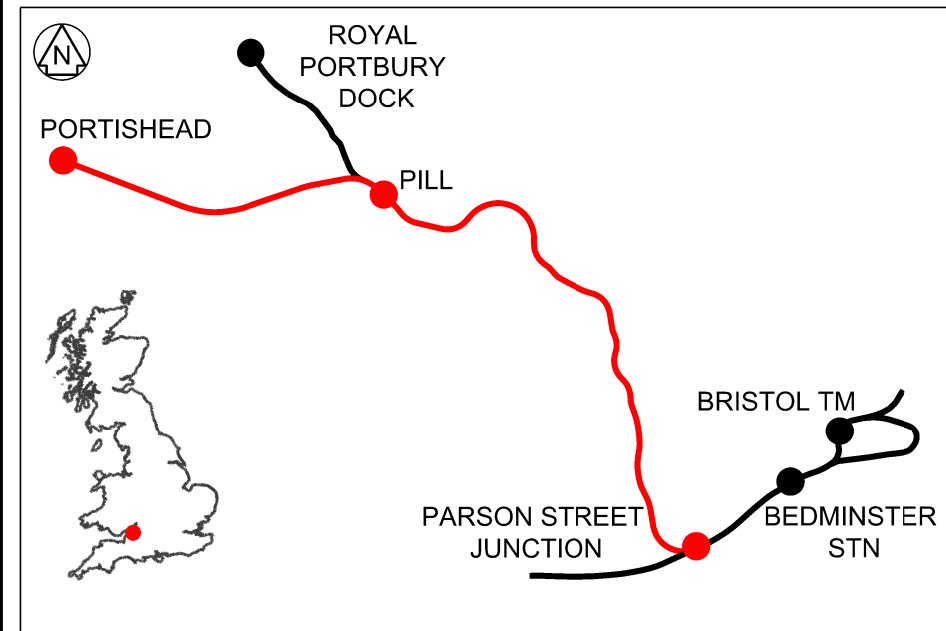
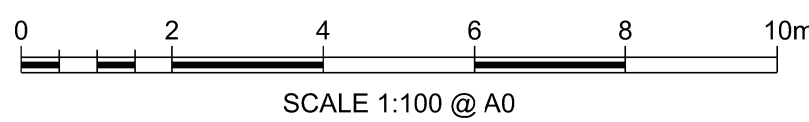
Legend/Notes

Notes

1. THIS IS NOT AN INSTALLATION DRAWING.
2. DO NOT SCALE FROM THIS DRAWING. REFER TO ARCHITECTS FOR BUILDING DIMENSION INFORMATION.
3. THE SIZES AND LOCATION OF ALL MEP EQUIPMENT, FIXTURES AND SERVICES ARE INDICATIVE ONLY. FINAL SIZE, SELECTION AND LOCATION SHALL BE CONFIRMED DURING THE DETAIL DESIGN.
4. THE FINAL COORDINATION OF ALL MEP SERVICES SHALL BE CONFIRMED AT A DETAIL DESIGN STAGE.

Legend

- PIR PRESENCE DETECTION
ABS ABSENCE DETECTION
PHC PHOTO CELL
M MANUAL SWITCHING
PC PULL CORD
● LIGHT SWITCH



ADD	26/09/19	FOR ECO APPLICATION		JB	RS
Rev	Date	Description of Revisions	Drawn	Chkd	Appr
Status	FIT FOR INFORMATION				Suitability
					S2



Contractor(s)



Project
PORTISHEAD BRANCH LINE
(METROWEST PHASE 1)

Drawing Title
PORTISHEAD PLATFORM
LIGHTING &
LIGHTING CONTROL LAYOUT
SHEET 2 OF 2

Designed	J. BACINSKI	Signed	Date	26/09/19
Drawn	J. BACINSKI	Signed	Date	26/09/19
Checked	R. SNELL	Signed	Date	26/09/19
Approved	R. SNELL	Signed	Date	26/09/19
Scale(s)	1:100	ELR & Message	POD	

Alternative Reference	Sheet	2 of 2
Drawing Number	Revision	